



# BUILDING MATERIALS

VALUE • SERVICE • SELECTION



**10% OFF**  
REG. PRICE  
All Other In-stock  
BBQ Grills



**MG MEGA DEALS**

**\$899**

BBQ Grill With 18" Firebox  
16" x 32". (27277)



**MG MEGA DEALS**

**\$319**

Table Top BBQ Grill  
12" x 20". (27284)

**MG MEGA DEALS**

**\$499**

30" Octagon Fire Pit With Grill  
(27285)

# ENTER TO WIN

**THIS CAMPER BBQ GRILL**  
**ONE WINNER**  
**FROM EACH LOCATION!**

See store for details. Drawing held May 30, 2024



**\$349**  
**VALUE**

16" x 20" Camper  
BBQ Grill (27282)

**MAY**  
**30**  
Drawing

VISIT US AT [MGBUILDINGMATERIALS.COM](http://MGBUILDINGMATERIALS.COM)

Sale Ends June 1st, 2024



# ROOFING & SIDING

<b>SIMPSON Strong-Tie</b> Straps	12" x 1.25"	LSTA12 (8671)	<b>79¢ each</b>	
	18" x 1.25"	LSTA18 (8678)	<b>1.09 each</b>	
	24" x 1.25"	LSTA24 (11484)	<b>1.49 each</b>	
Joist Hangers	2" x 4"	(6954)	<b>69¢ each</b>	
	2" x 6-8"	(6960)	<b>79¢ each</b>	
	2" x 10-12"	(7280)	<b>1.19 each</b>	
Rafter Tie	5.5"	H2.5A (7273)	<b>39¢ each</b>	
Multi-Use Adjustable Framing Angle	—	A35 (8061)	<b>59¢ each</b>	
Deck Base Bracket	4" x 4"	BC40 (7272)	<b>3.99 each</b>	
Mending Plate	3" x 6"	MP36 (8703)	<b>1.19 each</b>	
Plywood Clip	15/32"	(2082)	<b>12.99</b> 250 pc/box	
Pipe Grip Tie	—	PGT2-R (24638)	<b>2.39 each</b>	

**5<sup>99</sup>**  
**Vinyl Gutter**  
 Choose from White or Brown.  
 M1573 (5351598)  
 M0573 (7388739)

**AMERIMAX™**

**11<sup>66</sup>**  
**Vinyl Downspout**  
 Choose from White or Brown.  
 M1593 (5351564) M0593 (8976706)

**3<sup>99</sup>**  
**4" x 50' Sill Seal Weatherstrip**  
 For bottom wall plate. (9410)  
 6" x 50' (2331) **5.59**

**13<sup>99</sup>**  
**5" x 10' Style K Galvanized Gutter**  
 10' section. (1089)

**16<sup>99</sup>**  
**4" x 100' Window Wrap**  
 For sealing windows, doors and building joints. (2095)  
 6" x 100' (2098) **23.35**

**13<sup>95</sup>**  
**Tyvek 1-7/8" x 165' Roll Housewrap Tape**  
 (6575)



**MG MEGA DEALS**  
**66<sup>00</sup>**  
**HomeGuard Roll Housewrap**  
 9' x 150' roll. (9648)



**MG MEGA DEALS**  
**207<sup>00</sup>**  
**Tyvek Roll Housewrap**  
 9' x 150' roll. (6574)

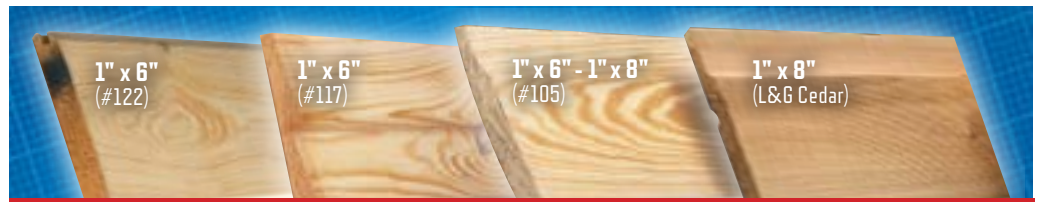


**Galvalume American Made 29 Ga. Corrugated Iron**

6'	(857)	<b>15.99</b>
8'	(858)	<b>21.40</b>
10'	(859)	<b>26.79</b>
12'	(860)	<b>32.09</b>
14'	(861)	<b>37.49</b>
16'	(862)	<b>42.79</b>
18'	(863)	<b>48.19</b>
20'	(864)	<b>53.49</b>
22'	(865)	<b>60.49</b>
24'	(866)	<b>65.99</b>

**Galvalume American Made 29 Ga. V-Crimp**

6'	(867)	<b>15.99</b>
8'	(869)	<b>21.40</b>
10'	(871)	<b>26.79</b>
12'	(873)	<b>32.09</b>
14'	(874)	<b>37.49</b>
16'	(875)	<b>42.79</b>
18'	(876)	<b>48.19</b>
20'	(877)	<b>53.49</b>



**SPECTACULAR SIDING MATERIAL**

	8'	10'	12'	14'	16'
1" x 6" #2 122	<b>6.60</b> (420)	<b>8.26</b> (421)	<b>11.29</b> (422)	<b>11.51</b> (423)	<b>15.10</b> (424)
1" x 6" #2 117	<b>6.60</b> (406)	<b>8.26</b> (407)	<b>11.29</b> (408)	<b>11.51</b> (409)	<b>15.10</b> (410)
1" x 6" #2 105	<b>6.60</b> (413)	<b>8.26</b> (414)	<b>11.29</b> (415)	<b>11.51</b> (416)	<b>15.10</b> (417)
1" x 8" #2 105	<b>8.37</b> (427)	<b>10.46</b> (428)	<b>12.56</b> (429)	<b>14.65</b> (430)	<b>16.74</b> (431)
1" x 8" L&G Cedar	<b>29.99</b> (294)	<b>37.73</b> (295)	<b>45.27</b> (296)	<b>52.79</b> (297)	<b>59.99</b> (298)

Some sizes and patterns not available at all yards. 1" x 6" is nominal size, true measurement is 3/4" x 5-1/2". 1" x 8" is nominal size, true measurement is 3/4" x 7-1/2".

## DOORS & LOCKS



**Colonist 6 Panel Interior Door Units**  
Includes colonial trim for both sides.

<b>24" x 80"</b>	(10795, 6214)	<b>114.99</b>
<b>30" x 80"</b>	(10796, 10801)	<b>127.99</b>
<b>32" x 80"</b>	(6215, 10802)	<b>133.99</b>
<b>36" x 80"</b>	(6216, 6217)	<b>139.99</b>



**19<sup>99</sup>**

**Kwikset Lockset & Deadbolt Combo**  
Polished brass.  
690T3CPK6 (3152)

**Kwikset**

**26<sup>99</sup>**

**Your Choice Deadbolt & Lockset Combo**  
Satin Nickel or Venetian Bronze.  
690P15CPK2 (553493)  
690P11PCP (21885)



**\$179**

**Self Storing Storm Door**  
32" x 80" or 36" x 80".  
White.  
288-ss (915747-48)  
**OR**  
Bronze Finish. (915749-50)

**\$299**

**Storm Door**  
36" x 80".  
White.  
830-80 (11654)

**\$259**

**Storm Door**  
36" x 80".  
White.  
350-04 (370810)



**169<sup>99</sup>**  
**Economy Steel Door Unit**  
32" x 80" or 36" x 80".  
(691, 692, 693, 694)



**199<sup>99</sup>**  
**6 Panel Steel Door Unit**  
32" x 80" or 36" x 80".  
Open in with weatherstrip and threshold.  
(695, 696, 697, 698)



**279<sup>99</sup>**  
**9-Lite Steel Door Unit**  
32" x 80" or 36" x 80". Open in with weatherstrip and threshold.  
(699, 700, 701, 702)



**439<sup>99</sup>**  
**Texas Star Steel Door Unit**  
36" x 80".  
With weatherstrip and threshold.  
(127582, 127583)



**439<sup>99</sup>**  
**Mini Blind Steel Door Unit**  
36" x 80" with 22" x 64" mini blind insert between glass. Includes frame, weatherstrip and threshold.  
(127584, 127586)



**44<sup>99</sup>**  
**Economy T-Bar Wood Screen Door**  
32" x 80" or 36" x 80".  
(1036, 1037)



**85<sup>99</sup>**  
**3-Bar Wood Screen Door**  
30" x 80", 32" x 80" or 36" x 80".  
Aluminum screen wire and no finger joints.  
(1010, 1011, 1012)



**109<sup>99</sup>**  
**Texas Star Wood Screen Door**  
32" x 80" or 36" x 80".  
Aluminum screen wire and no finger joints.  
(1013, 1014)



**125<sup>99</sup>**  
**Raised Panel Screen Door**  
32" x 80" or 36" x 80".  
Aluminum screen wire and no finger joints.  
(1008, 1009)



# KITCHEN & BATH

## MOEN®



**\$55<sup>99</sup>**

**2-Handle Lavatory Faucet With Pop-Up**  
Chrome finish. Adler. 84603 (84603)



**\$45<sup>99</sup>**

**Single Control Kitchen Faucet Without Spray**  
Chrome. 571 (256832)



**\$89**

**2-Handle Kitchen Faucet**  
Chrome finish with spray. CA87888 (87888)



**\$11<sup>99</sup>**

**2-Handle Lavatory Faucet**  
Features washerless construction, aerator and clear acrylic handles. Without pop-up. NM-01 (14872)



**BANNER**

**\$32<sup>99</sup>**

**2-Handle Lavatory Faucet With Pop-Up**  
Chrome finish with clear acrylic handles. 301 (220301)



**BANNER**

**\$66<sup>99</sup>**

**2-Handle Lavatory Faucet With Pop-Up**  
351B (257025)



**\$12<sup>99</sup>**

**2-Handle Kitchen Faucet**  
Features washerless construction, aerator and clear acrylic handles. NM-21 (14873)

**\$129**

**1.28 Gal. American Standard White Round Bowl**  
Includes seat, wax bowl ring and screw kit. 751DA101.020 (4830)

**White ADA Elongated Bowl**  
Includes seat, wax bowl ring and screw kit. 751AA101.020 (4832) **\$149**

**\$139**

**1.28 Gal. American Standard Bone Round Bowl**  
Includes seat, wax bowl ring and screw kit. 751DA101.021 (4833)

**Bone ADA**  
Includes seat, wax ring, flange bolts and bolt caps. 751AA101.021 (4835) **\$159**

*American Standard*



**MG MEGA DEALS**

**\$59<sup>99</sup>**

**1-Handle Tub & Shower Faucet**  
531 (27388)



**BANNER**

**\$59**

**2-Handle Shower Faucet**  
Chrome finish. 161 (257021)



**\$79**

**3-Handle Tub & Shower Faucet**  
131 (9975)



**MOEN® \$99**

**1-Handle Chrome Tub & Shower Faucet**  
82603 (82603)



**3 Pc. White Bathtub Wall Set**

**32" x 60"**

B23205-6032-WH (118744)

**\$349.00**

**32" x 60" White Bathtub**

**Left Hand Drain**

B23605-6032L-WH (118748)

**\$359.00**

**Right Hand Drain**

B23605-6032R-WH (118749)



**3 Pc. 48" White Shower Wall Kit**

**34" x 48" x 74"**

B12205-4834-WH (118740)

**\$499.00**

**White Shower Base**

**34" x 48"**

B12135-4834-WH (118731)

**\$229.00**



**3 Pc. 60" White Shower Wall Set**

**32" x 60" x 74"**

B12205-6032-WH (118742)

**\$529.00**

**32" x 60" White Shower Base**

**Left Hand Drain**

B12135-6032L-WH (118736)

**\$269.00**

**Right Hand Drain**

B12135-6032R-WH (118737)



# LANDSCAPING

## Landscaping Borders & Stepping Stones

<b>Straight Scallop Border</b> (Gray)	<b>12"</b>	(74800)	<b>1.39</b> each	
<b>Straight Scallop Border</b> (Red)	<b>12"</b>	(74851)	<b>1.49</b> each	
<b>Stepping Stone</b> (Pewter)	<b>2" x 8" x 16"</b>	(9267)	<b>1.49</b> each	
<b>Square Stepping Stone</b> (Pewter)	<b>12"</b>	(9269)	<b>1.59</b> each	
<b>Square Brickface Stepping Stone</b> (Red)	<b>16"</b>	(9312)	<b>4.39</b> each	
<b>Stratford Stepping Stone</b> (Old Town Blend)	<b>2" x 16" x 16"</b>	(72499)	<b>4.39</b> each	

## Landscaping Rocks, Pebbles & Mulch

<b>Pond Pebbles</b>	<b>0.5 Cu. Ft.</b>	54249 (54249)	<b>4.69</b> each	
<b>Pea Pebbles</b>	<b>0.5 Cu. Ft.</b>	54255 (54255)	<b>4.69</b> each	
<b>Red Lava Rocks</b>	<b>0.5 Cu. Ft.</b>	54341 (415976)	<b>5.49</b> each	
<b>White Deco Rocks</b>	<b>0.5 Cu. Ft.</b>	54141, 54781V (410514)	<b>5.59</b> each	
<b>Hardwood Mulch</b>	<b>2 Cu. Ft.</b>	(203457)	<b>2.49</b> each	
<b>Red Mulch</b>	<b>2 Cu. Ft.</b>	CMR02H (650217)	<b>3.29</b> each	
<b>Cedar Mulch</b>	<b>2 Cu. Ft.</b>	CE02H (209533)	<b>3.59</b> each	

**MG MEGA DEALS**

**17<sup>97</sup>**

**2 Gal. Poly Sprayer**  
Features funnel top, translucent tank and unitized pump for easy operation. SX-8B (475)



**39<sup>99</sup>**

**2 Gal. Premium Poly Sprayer**  
2602 (469)  
**3 Gal. Sprayer**  
2603 (470) **45.99**

**CHAPIN**  
KEEP HOSE ENDING

**2<sup>99</sup>**

**Ring Sprinkler**  
Soft rain-like spray.  
58029 (7997)

**3 Arm Revolving Sprinkler**  
58221 (13553) **2.99**

**8 Pattern Roto Turret Sprinkler**  
Features 8 different patterns for multi-purpose use. 58223 (1880) **4.89**

**Orbit®**

**7<sup>99</sup>**

**Oscillating Sprinkler**  
Covers 2,600 sq. ft. 4 watering positions. Great for large areas. 56133 (7696)

**3400 Sq. Ft.**  
58894N (13554) **12.99**

**11<sup>99</sup>**

**2 Pk. Spike Base Impact Sprinkler**  
Full or part circle. Up to 80" diameter, with adjustable directional stops. Mounted on metal spike base. 58362 (13798)

**11<sup>97</sup>**

**3 Pc. Hose Nozzle Set**  
58594N (652551)

**MG MEGA DEALS**

**42<sup>99</sup>**

**Suncast Garden Hose Reel**  
Holds 175' of 5/8" garden hoses.  
JNF175B (652928)

**14<sup>44</sup>**

**5/8" x 50' Vinyl Reinforced Hose**  
3 ply. GH-585023L (7697)



**44<sup>99</sup>**

**5/8" x 75' Soft & Supple Heavy Duty Hose**  
Crushproof couplings, 400 PSI burst strength.  
SNSS58075 (6540868)

**SWAN**  
The Watering Company™

**19<sup>99</sup>**

**5/8" x 50' Weatherflex Hose**  
SNWF58050 (6432413)



**1<sup>99</sup>**

**Plastic "Y" Hose Shut-Off**  
6C511 (10943)

**4<sup>99</sup>**

**Metal Garden Hose Hanger**  
58305 (13117)

**1<sup>89</sup>**  
Each  
Your Choice

**Plastic Hose Repair Ends**  
Male 7/16"-9/16" (6874)  
Male 5/8"-3/4" (6872)  
Female 7/16"-9/16" (8413)  
Female 5/8"-3/4" (3743)

**Plastic Hose Menders**  
7/16-9/16" (6873)  
5/8-3/4" (6871)



# We Have The Right Lawn, Garden & Power Tools For You.



**WORX**

**12 Amp Electric Blower**  
WG507 (8381832) **\$68**

**15" Electric Trimmer**  
WG119 (3223245) **\$64**

**3-1/2 HP 16" Bar  
Electric Chainsaw**  
WG303.1 (7442460) **\$105**

**8 Amp 10" Bar  
Electric Pole Pruner**  
WG309 (8511495) **\$119.99**



**20" Gas Trimmer**  
28cc, 2 cycle, straight shaft.  
330LK (14502) **\$319.99**

**Gas Backpack Blower**  
29.5cc engine, 145 mph.  
150BT (542093) **\$349.99**



**17" Gas Trimmer**  
21.7cc gas, 2 cycle, curved shaft.  
122C (542053) **\$179.99**

**Husqvarna**

**Gas Handheld Blower**  
28cc engine, 170 mph.  
125B (54205) **\$199.99**



**5<sup>99</sup>**

**Household Corn Broom**  
Indoor or outdoor use.  
105 (6984)

**Large Angler Broom**  
Wide angle for indoor  
or outdoor use. (6986) **6.99**

**17<sup>99</sup>**

**40" Weed Cutter**  
14" x 2-1/2" serrated  
blade. Forged, heat  
treated braces.  
62105 (6490)



**13<sup>99</sup>** Each  
Your Choice

**54" Steel Bow Rake**  
Fiberglass handle with 14 tine head.  
34465 (6513)

**48" Long Handle Square Point Shovel**  
Fiberglass handle. 344637PRL-FP (6511)

**48" Long Handle Round Point Shovel**  
Fiberglass handle. 34463PRL-FP (6510)



**CORONA**

**\$54**

**Corona Pole Pruner**  
Compound-action pulley  
system. 15" curved saw  
blade. Lightweight fiberglass  
pole telescopes to 12'. 24"  
cushioned grip.  
TP3841 (22001)

**24<sup>97</sup>**

**Roof Ripper**  
48" handle,  
14-gauge head,  
polished and  
lacquered socket.  
31343 (27158)



**Milwaukee M18 String Trimmer**  
Brushless motor delivers up to 6,200  
RPM with up to a 16" cutting swath.  
2825-21ST (0333229) **\$279.99**



**239<sup>99</sup>**

**6" Milwaukee M12 Hatchet Pruning Saw Kit**  
12V. Cuts 3" hardwoods. Delivers up to 120 cuts per  
charge. 2527-21 (0333385)

**\$139**

**Milwaukee Packout  
Rolling Tool Box**  
250 lb. weight capacity.  
48-22-8426 (1383876)



# YARD ESSENTIALS



**MG MEGA DEALS**

# 89<sup>00</sup>

**16' Aluminum Extension Ladder**  
Type 3, 200 lb. duty rating.  
L-2321-16 (5348)

**LOUISVILLE LADDER**

# \$219

**24' Aluminum Extension Ladder**  
Type 3, 200 lb. duty rating.  
L-2324-24 (5350)

simple green



# 9<sup>99</sup>

**1 Gal. Simple Green Cleaner**  
13005 (25084)



# 11<sup>99</sup>

**EZ Read Jumbo Rain Gauge**  
2706 (6576)

# 2<sup>19</sup>

**8 Oz. Hummingbird Food Powder**  
240SF (4059069)

PERKY-PET®

# 15<sup>88</sup>

**32 Oz. Hummingbird Feeder**  
Glass 5-Port/Perch  
785 (21172)



# 1<sup>89</sup>

**5/8" x 5-1/2" x 6' Dog Eared Fence Pickets**  
Treated. (466)  
**5/8" x 5-1/2" x 6' Incense Cedar**  
(487) **2.19**

National Hardware™

# 6<sup>99</sup>

**Slide Action Bolt Latch**  
N165-506 (7157613)



# 12<sup>99</sup>

**Ornamental Gate Thumb Latch**  
N178-616 (7159007)



# 8<sup>99</sup>

**42 Gal. 20 Pk. Contractor Trash Bags With Ties**  
Heavy duty. 3 mil.  
FG-P9934-01A (603433)



Rubbermaid

# 33<sup>99</sup>

**Brute 32 Gal. Heavy Duty Trash Can**  
FG263200GRAY (32000)

**MG MEGA DEALS**

# 2<sup>29</sup>

**Your Choice**  
**40 Lb. Potting Soil OR 40 Lb. Top Soil**  
PS24H (650376), TS40H (3796085)



# 11<sup>99</sup>

**Flea Killer Ready-To-Use**  
Liquid spray application.  
EFSH128 (6087)



# 9<sup>66</sup>

**1 Gal. Spectracide Ready-To-Use Weed Stop For Lawns**  
HG-96543 (1373539)



# 8<sup>69</sup>

**10 Lb. Triazicide Insect killer for lawns.**  
HG-53944 (10898)

Spectracide



# 2<sup>95</sup>

**20 Oz. Wasp & Hornet Killer**  
HG-97221 (77631)



# 4<sup>44</sup>

**Fire Ant Killer Granules**  
Mound Destroyer  
HG-96470 (9124546)



# 5<sup>99</sup>

**Fly Trap With Bait**  
Just add water and hang.  
T524 (658010)



# 1<sup>44</sup>

**Fly Ribbon Fly Trap**  
Catches flies indoor or outdoors.  
FR3B (8212474)



# 13<sup>97</sup>

**Hand Held Fertilizer Spreader**  
HYG-03D (6777445)

## K'ARCHER



**129<sup>99</sup>**

Karcher 1800 PSI K3 Follow Me Electric Pressure Washer  
1.601-990.0 (1902014)



**\$299**

2900 PSI Gas Pressure Washer  
2.6 GPM, 196cc. 1.107-414.0 (1902527)



**37<sup>97</sup>**

1 Gal. Ready Seal Exterior Stain  
Assorted colors.  
(0112, 0115, 0120, 0125, 0130, 0145)

5 Gal. (0512, 0515, 0520, 0525, 0530, 0545) **159.99**



**24<sup>99</sup>**

115 Oz. Kool Seal Storm Patch  
Acrylic patching cement patches  
tough leaks on wet or dry surfaces.  
KS0085100-16 (15853)



**21<sup>99</sup>**

5 Gal. Driveway  
Asphalt Filler & Sealer  
HE130074 (10014)



### Blue Original Painter's Tape

1" x 60 Yds. .94"	2090-24NC (21676)	<b>3.44</b>
1.5" x 60 Yds. 1.41"	2090-36NC (21677)	<b>5.99</b>
2" x 60 Yds. 1.89"	2091-48E (21678)	<b>6.99</b>
<b>Masking Tape</b>		
1.5" x 60 Yds. 1.41"	5102-1.5 (5272)	<b>2.59</b>



**7<sup>99</sup>**

1 Gal. Plastic Roof Cement  
Use on flashings, gutters and chimneys.  
(825)

10.5 Oz. (4876) **2.09**

5 Gal. (824) **35.99**



**29<sup>97</sup>**

1 Gal. Kool Seal  
Elastomeric Roof Coating  
Forms a thick rubber-like blanket of  
protection. Expands and contracts  
with your roof. (15854)

5 Gal. (10016) **\$109**



**16<sup>99</sup>**

1 Gal. Rubberized Leak  
Stopper Roof Patch  
Seals holes on roofs and  
gutters to stop leaks. (15851)



**4<sup>99</sup>**

4 Pc. Polyester Paint Brush Set  
1-1/2" and 2" trim brushes & 3" and 4"  
general purpose brushes.  
A2204 (21655)



**2<sup>95</sup>**

6" Flexible Taping Knife  
For joint compound  
applications. 04851 (1512)



**1<sup>99</sup>**

Your Choice  
Pylam Professional 9"  
Roller Cover  
3/8" or 1/2" nap.  
RC143, RC144 (8075, 8078)



**9<sup>97</sup>**

10 Oz. Orange Peel  
Wall Texture Spray  
4091-06 (9356)



**1<sup>99</sup>**

3/8" x 20' Caulk Backer Rod  
(17368)  
1/2" x 20' (17384) **2.99**  
5/8" x 20' (17400) **3.99**



**3<sup>97</sup>**

8 Oz. Gorilla Wood Glue  
White. 6200002 (21340)

**4<sup>97</sup>**

15-Gram Super Glue  
Dries in 10-30 seconds,  
no clamping required.  
7805009 (21341)







**7<sup>97</sup>**

**1 Gal. Paint Thinner**  
GKPT94400 (7642)



**2<sup>99</sup>**

**1-3 Gal. Drill Paint Mixer**  
M-101 (452232)



**79¢**

**1 Qt. Calibrated  
Mixing Cups**  
300343 (466979)

**2 1/2-Qt.**  
300344 (372938) **1.39**

**5-Qt.**  
300403 (460162) **1.99**



**3<sup>99</sup>**

**Ratchet Caulking Gun**  
Non-slip action. Heavy duty construction. For most caulk tubes. (5281)



**MG MEGA DEALS**

**88<sup>00</sup>**

**SprayMate Drywall Hopper Gun**  
2 gal. hopper. Thermoplastic.  
HG692 (13535)

**15<sup>97</sup>**

**28" Quick Mixer**  
819 (1495)

**5<sup>99</sup>**

**Drywall Hand Sander**  
9-3/8" x 3-1/4".  
200P (151729)



**10<sup>79</sup>**

**Easy Sand Lightweight Setting-Type Joint Compound**  
18 lb. bag. 5, 20, 45 or 90 minute dry time. (9434, 38, 39, 11135)



**6<sup>99</sup>**

**16 Oz. Latex Natural Wood Putty**  
Fills nail holes, gouges, and cracks.  
00529 (1882)

**2<sup>99</sup>**

**8 Oz. Fast'N Final Spackling**  
Interior & exterior. 12140 (7968)



**PANEL REY**

**7<sup>99</sup>**

**Ready Mix Light Weight Joint Compound**  
38 lb. (5081)



**2<sup>29</sup>**

**Alex Plus Acrylic Latex Caulk with Silicone**  
White. 18101 (4997)

**9<sup>95</sup>**

**10.1 Oz. Flexible Sealant**  
Clear. 18388 (11698)

**10.1 Oz Alex Fast Dry Acrylic Latex Caulk Plus Silicone**

White. 18425 (501) **3.39**



**3<sup>69</sup>**

**10.1 Oz. Latex Concrete Sealant**  
Gray. 18096 (5009)

**6<sup>99</sup>**

**10.1 Oz. Silicone Sealant for Windows, Doors & Siding**  
Clear or White. 08641 (5068) 08646 (5069)

**Dynaflex 230 Acrylic Latex Caulk**  
Cedar, Brown, Gray, Dark Bronze, Black, or Almond. (6090740, 6584122, 6584254, 6584635, 6812697, 6976955) **4.44**



**2<sup>97</sup>**

**Kwik Seal Kitchen & Bath Adhesive**  
5.5 oz. Mold and mildew resistant. Paintable. Easy application. 18001 (5008)



**ROAD RESCUE**

**17<sup>59</sup>**

**50 Lb. Asphalt Patch Road Rescue**  
(2179)





## FENCING & POSTS



### 5-Bar 50" Galvanized Tube Gates

4'	(7961)	<b>79.99</b>
6'	(7962)	<b>88.99</b>
8'	(7963)	<b>93.99</b>
10'	(7964)	<b>97.99</b>
12'	(7966)	<b>115.99</b>
14'	(7967)	<b>142.99</b>
16'	(7970)	<b>169.99</b>

### 6-Bar 50" 16-Ga. Heavy Duty 2" Galvanized Tube Gate.

10'	(9355)	<b>215.99</b>
12'	(9357)	<b>242.99</b>
14'	(9384)	<b>269.99</b>
16'	(9386)	<b>299.99</b>

### Full Wire Galvanized Tube Gates

12'	(9176)	<b>199.99</b>
14'	(9177)	<b>209.99</b>
16'	(9184)	<b>249.99</b>



**15<sup>99</sup>**

### 10" Fence Pliers

Multiple uses as a hammer, wire cutter, heavy duty puller and others. (9177239)

**26<sup>99</sup>**

### T-Post Driver

Makes driving a T-post a lot easier. (81196)



**1<sup>99</sup>**

### T-Post Clips

25 pieces per bag. (7373)



### TREATED FENCE & BARN POSTS

4" x 6.5'	(7375)	<b>9.79</b>
4" x 8'	(7376)	<b>13.59</b>
6" x 8'	(7377)	<b>22.89</b>
5" x 10'	(7378)	<b>31.99</b>
5" x 12'	(7381)	<b>36.99</b>
6" x 20'	(12564)	<b>96.99</b>
6" x 25'	(6250)	<b>149.99</b>
8" x 10'	(7380)	<b>56.99</b>

### Steel T-Posts

For use with all types of wire fencing. Rust-resistant finish. Includes 5 clips.

6'	(3811)	<b>4.99</b>
6.5'	(7374)	<b>5.45</b>
8'	(9202)	<b>8.69</b>
10'	(9203)	<b>13.69</b>
10'4" Galvanized	(9201)	<b>14.10</b>

Pleasanton and Uvalde only.



**36<sup>99</sup>**

### T-Post Puller

Won't damage post. (21488)



### Star Drive Tan Deck Screws

#9 x 2.5" (1 Lb.)	(MF51174)	<b>8.97</b>
#9 x 2.5" (5 Lb.)	(MF51184)	<b>29.97</b>
#9 x 3" (1 Lb.)	(MF51175)	<b>8.97</b>
#9 x 3" (5 Lb.)	(MF51185)	<b>29.97</b>



Starting At

**97<sup>99</sup>**

48" Chain Link Fence (96156)

60" Chain Link Fence (96157) **118.99**

73" Chain Link Fence (94286) **128.99**

**79<sup>99</sup>**

14 Ga. (2Pt)  
Hi Tensile Class 3  
Barbed Wire  
1,320'. (118599)



15.5 Ga.  
(9286) **62.50**

12.5 Ga.  
(7388) **96.99**

**79<sup>99</sup>**

48" x 100' Welded Wire  
2" x 4" spacing. 14 gauge.  
(9218)



**179<sup>99</sup>**

48" Non-Climb Horse Fence  
1348-2-12-1/2

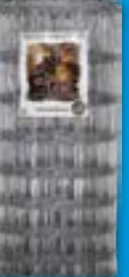
Check locations for other available sizes. (9215)

47" Fence 1047-6-12-1/2  
(8092) **189.99**



**309<sup>99</sup>**

48" Fence 1348-4-12-1/2  
Sheep and goat. (9211)



**235<sup>99</sup>**

48" 949-6-12-1/2  
Fixed Knot Fence  
(128510)



**25<sup>99</sup>**

50" x 16' Galvanized  
Cattle Panel

Durable stock panels for all types of farm and ranch use. (7390)

34" x 16' Galvanized  
Hog Panel

(9207) **26.99**  
Image not shown.





**2<sup>99</sup>**

**125W Heat Lamp Bulb**  
125R40/1 (3445558)



**4<sup>66</sup>**

**Your Choice**  
**4 Pk, A19 LED Household Bulbs**  
Soft White. 40W. (7059082)  
60W. (7147283)



**8<sup>99</sup>**

**2 Pk, 75W LED Flood Light Bulb**  
(6532914)



**12<sup>97</sup>**

**Outdoor Lantern Light Fixture**  
Features solid white and beveled glass panels.  
AL1037-43L (3576527)  
**LED 0038WDBK (7145980) 21.97**



**54<sup>97</sup>**

**Heath Zenith®**

**Motion Activated LED Security Light**  
180° sensing angle.  
White HZ-5867-Wh (7133598)  
Black HZ-5867-BZ (7133606)



**7<sup>27</sup>**

**Outdoor Wall Fixture**  
Durable shatter and weather resistant polycarbonate with clear ribbed glass.  
W158K01-38883L (6306328)



**44<sup>99</sup>**

**42" Hugger Ceiling Fan**  
White with light kit.  
42-742T-SH-EN-WH (0410969)



**49<sup>99</sup>**

**42" 4-Blade Hugger Ceiling Fan**  
Brushed nickel. Includes mushroom light kit.  
42-742T-MR-EN-BN (9320151)



**44<sup>97</sup>**

**Your Choice**  
**2 Pk. 11" LED Ceiling Light Fixtures**  
Flush mount.  
Brushed Nickel 4200-LED-BN (7145964)  
Bronze 4200-LED-BR (7145972)



**10<sup>97</sup>**

**Bedroom Ceiling Light Fixture**  
12" bent white square glass.  
Uses two 60 watt bulbs.  
F98WH02-12643L (7262116)



**\$85**

**Your Choice**  
**52" 5-Blade Ceiling Fan**  
Polished brass. Includes light kit.  
CF-78043 (0646331)

**OR 52" 5-Blade Hugger Ceiling Fan**  
Antique brass. Includes light kit.  
CF-780491 (0555706)



**119<sup>99</sup>**

**Your Choice**  
**52" White Ceiling Fan**  
5 reversible blades. Includes light kit and bulbs. 53236 (2887180)

**OR 52" 5-Blade Ceiling Fan**  
New bronze. Includes light kit and bulbs.  
53238 (3757648)

*Hunter*

**25<sup>99</sup>**

**4' LED Shop Light**  
4300 Lumen. (1243302)



**9<sup>97</sup>**

**Your Choice**  
**Utility Hall Ceiling Light**  
White with 6" round glass globe.  
F3WH01-3375W-3L (6238703)



**OR Polished Brass Hall Light**  
"Acorn" polished brass with cut crystal textured glass.  
RE-F-013-PB-3L (5793518)

**15<sup>99</sup>**

**LED Lamp Work Light**  
15W, 120V 1000 Lumen.  
O-C1-1000SS (3182896)



**22<sup>97</sup>**

**Chrome Ceiling Light**  
Decorative white prismatic cover.  
F14CH02-80023L (6886733)



**12<sup>97</sup>**

**Semi Flush Ceiling Light**  
White scroll design glass shade.  
F98WH02-1204H3L (7214448)

Find us on  Facebook.com/MGBuildingMaterials

**PLEASANTON**

1734 W. OAKLAWN  
**(830) 569-2543**  
STORE HOURS:  
MON.-FRI. 7:30-6:00  
SAT. 7:30-5:00

**SAN ANTONIO**

2651 SW Military Dr.  
**(210) 924-5131**  
STORE HOURS:  
MON.-FRI. 7:15-6:00  
SAT. 7:15-5:00

**CORPUS CHRISTI**

7406 S. PADRE ISLAND DR.  
**(361) 884-9811**  
STORE HOURS:  
MON.-FRI. 7:30-6:00  
SAT. 7:30-5:00



**KERRVILLE**

2202 MEMORIAL BLVD.  
**(830) 257-2300**  
STORE HOURS:  
MON.-FRI. 7:30-5:00  
SAT. 8:00-5:00

**UVALDE**

2301 EAST MAIN  
**(830) 278-4439**  
STORE HOURS:  
MON.-FRI. 7:30-5:30  
SAT. 8:00-5:00



**Shop Where The Pros Buy!**

**Sale Ends June 1st, 2024**

**MG MEGA ESSENTIALS**



CASH & CARRY PRICES: Prices are subject to merchandise on hand and we reserve the right to limit quantities. Prices are F.O.B. our yard. Delivery services are available at additional charge. Items may vary from picture. Not responsible for printing errors.